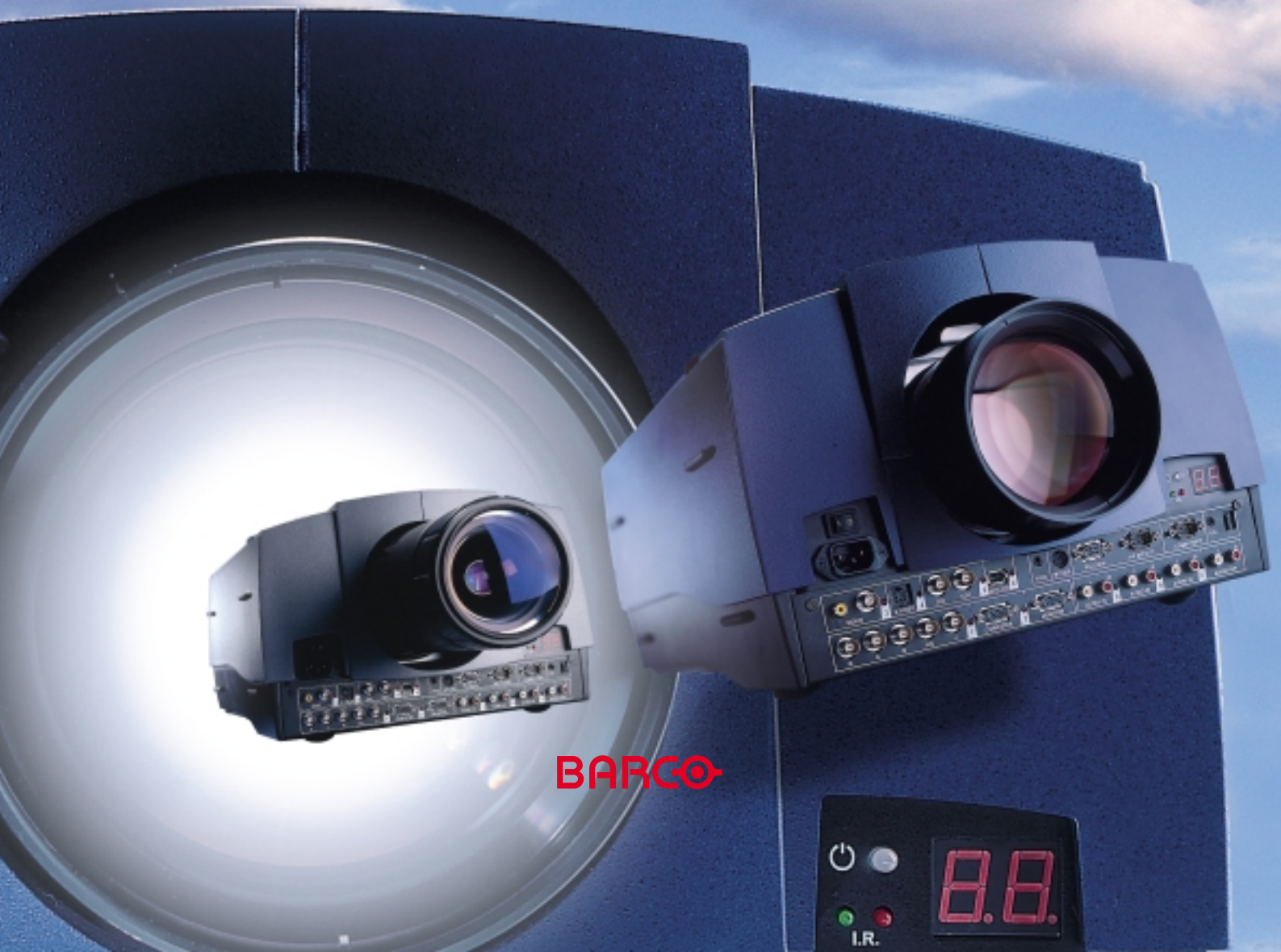


BARCO 6300 SERIES

**Extreme
Projection Power**



BARCO



Extreme! Projection Power for Presenters, Speakers



BARCO's 6300 Series is a powerful range of portable Digital Light Cannon projectors, which deliver dynamic and compelling visual presentations. They offer an unprecedented scope of application possibilities for mobile presenters, speakers and trainers. The units' attractive, contemporary design is easy to integrate in the most prominent meeting places.



The performance, versatility and convenient form-factor of BARCO's 6300 Series projectors make them powerful presentation tools for boardrooms, training centers, conference rooms, education centers, auditoria, demo rooms, point-of-sale applications...



BARCO 6300 SERIES

and Trainers

- True to Life Colors with TCR^{Plus}
- State-of-the-Art Optics

BARCO 6300 SERIES

- Compatibility up to 1,280 x 1,024 pixels

- 1,024 x 768 Pixels Native Resolution

- High Light Output of 2200 ANSI lumens

BARCOGRAPHICS 6300

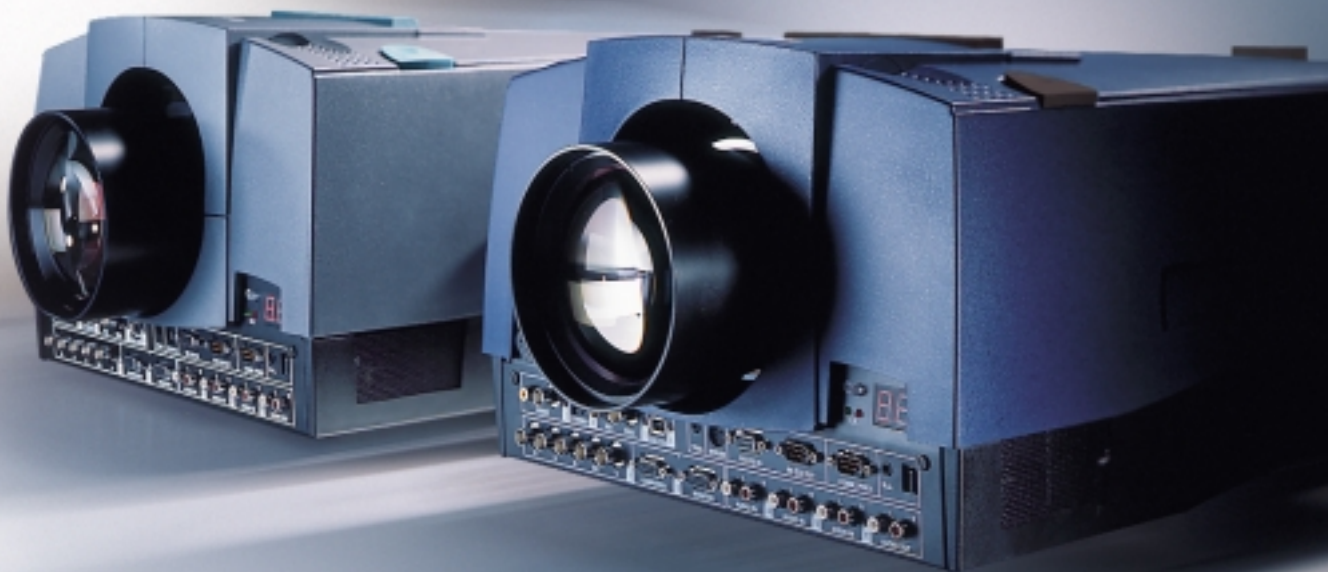
- Compatibility up to 2,000 x 1,280 pixels

- 1,280 x 1,024 Pixels Native Resolution

- High Light Output of 2000 ANSI lumens

BARCOREALITY 6300

- Unsurpassed Ease-of-Use
- Advanced Signal Recognition system





TCR^{Plus} Astonishing Realism

BARCO's powerful TCR^{Plus} processing enhances the quality of conventional video sources which results in vibrant images with remarkable depth and clarity.

Motion Adaptive Noise Reduction

The Digital Noise Reduction reduces video noise without introducing motion artifacts.

It can be user-adjusted to eliminate noise and pixel jitter on all video, HDTV and computer data sources.

Sharper Picture Display

Improved composite video processing circuits deliver sharper pictures thanks to a new "edge" enhancement circuit.

An improved fine tuning control is also built-in for superior picture control.

Dynamic Color Depth

BARCO's TCR^{Plus} technology uses advanced, real-time picture analysis, to grade and precisely control the color contrast of each image pixel.

The amount of saturation and contrast is adjustable to obtain superior picture performance with any video source.

Stable Images

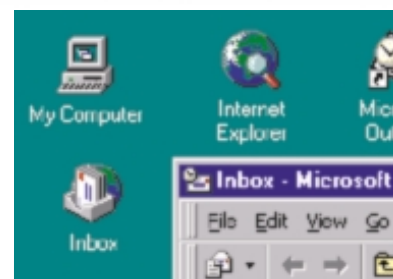
The sharpness and stability of both still and moving images is guaranteed by the intelligent adaptive processing by TCR^{Plus}, which totally eliminates interlace jitter.



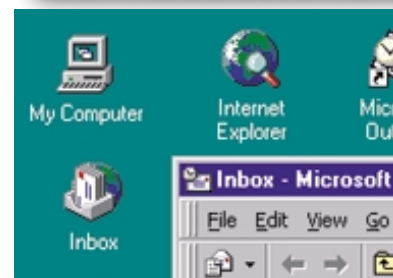
Patented Pixel Map Processor

Optimal Character Readability

When the resolution of a data image doesn't match the native resolution of the LCD panel, the image needs to be remapped. BARCO's innovative Pixel Map Processor recalculates every pixel with state-of-the-art digital signal processing techniques. The result is optimal picture quality, crisp graphics with smooth and exceptionally readable characters. The Pixel Map Processor provides full compatibility with a wide range of computer data and graphics standards.



Detail of an image projected by most common scan converters



Detail of an image projected after digital conversion by BARCO's patented Pixel Map Processor.



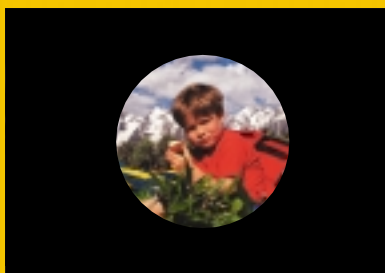
Perfect Geometry

Precision projection lenses provide superior image quality with an absolute minimum of geometric distortion.

Razor Sharp in Every Corner

State-of-the-art optics ensure the highest resolution with unsurpassed clarity in every part of the projected image.

Programmable blanking



Allows the user to define complex blanking patterns using a range of geometric shapes (circles, squares, lines). The blanking information is stored in the projector's non-volatile memory.

High Precision Projection Lenses

Precise Projection from Any Position or Distance

A wide range of lenses is available for front or rear screen installations from practically any angle and throw distance. All zoom lenses allow the projector to be installed up to 120% off-axis, without losing any brightness or resolution. Motorized lens shift greatly simplifies on-site adjustment (up to 12% horizontally and 120% vertically).



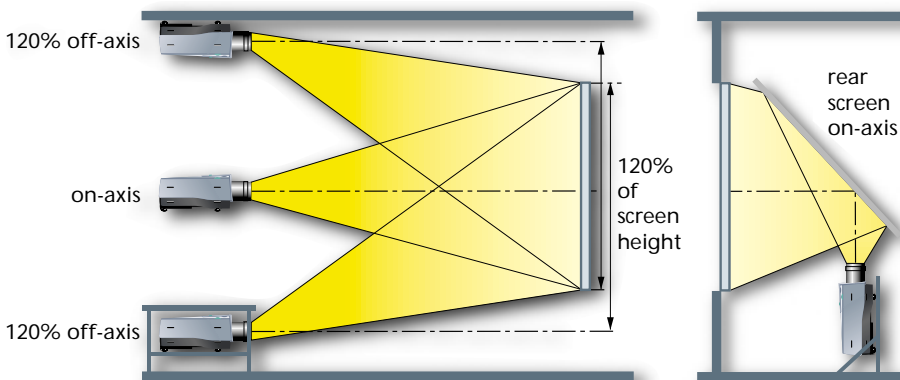
BARCO's unique lens mount system allows lenses to be replaced in less than one minute.



Easy Replacement of Older Generation Projectors

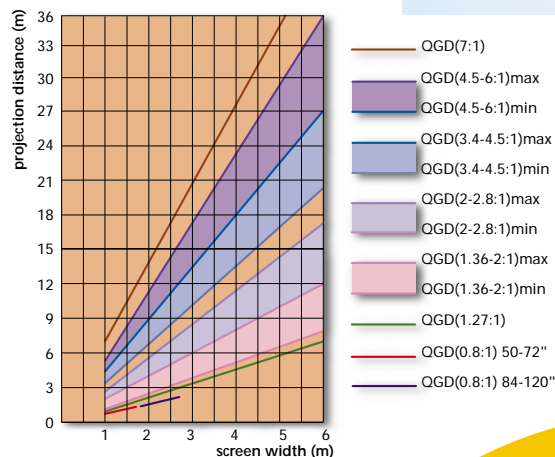
BARCO's 6300 Series has some major advantages, which makes them the ideal CRT replacement projectors:

- The QGD (1.36 - 2.1: 1) zoom lens has a throw ratio comparable to that of CRT projectors.
- TCR^{PLUS}: delivers excellent video images, formerly only achieved by CRT projectors.
- No need to replace cabling and ceiling mount as BARCO supplies the right adapter plate for most other brands. This can result in substantial savings.



A Broad Range of Lenses for All Applications ⁽¹⁾

- **QGD (0.8:1)** two fixed focus, very short throw lenses specially designed for rear screen on-axis projection on screen sizes between 50" and 72" or 84" and 120" diagonal.
- **QGD (1.27:1)** fixed focus, short throw lens designed for use on-axis or up to 100% off-axis on screen diagonals greater than 50".
- **QGD (1.36 - 2:1)** motorized zoom lens specially designed for easy replacement of a pre-existing CRT projector.
- **QGD (2 - 2.8:1)** motorized zoom lens provides extra versatility for a wide range of applications
- **QGD (3.4 - 4.5:1)** motorized zoom
- **QGD (4.5 - 6:1)** motorized zoom
- **QGD (7:1)** fixed focus lens provides extended versatility for long throw applications



1. The projection distances specified for BARCO QGD Series lenses are for the BARCOGRAPHICS 6300. When used on the BARCOREALITY 6300, the projection distances will be 2.5% longer for the same screen width due to the difference in the aspect ratio of the LCD panels.



Putting the projector on a table or pedestal 120% off-axis means that everyone in the audience can have a clear and undisturbed view of the screen.



Wide Input Compatibility, Automatic Source Switching



Abundant Front Panel Connections

A full complement of input signal connections provides unmatched system versatility and flexibility. The front panel input array offers neat integration of the projector with almost invisible cable routing.

Digital and Analog Camcorder Sources



Analog Video Tape Sources



DVD, Laserdisc



Digital Video Tape Sources



Computer Data Sources



SDI

The Serial Digital Input facility allows the connection of Digital Video Sources. An active loop-through is provided for monitoring or for double and triple stacking applications.

IEEE 1394 FireWire

The optional IEEE 1394 FireWire input allows high speed serial connection of the latest generation of Digital Video and Digital RGB sources!

Exceptional Input Compatibility

BARCO's 6300 Series is compatible with a very wide range of input signals: from DVD sources to SDI Digital Video, and from the latest HDTV sources to all of today's popular RGB computer formats.

Instantly Connect to Any Source

The projector automatically recognizes all signal sources and offers intelligent user-adjustable priority switching.

Easy to Use, Ready for Any Application



Double and triple stacking is possible with or without frame.



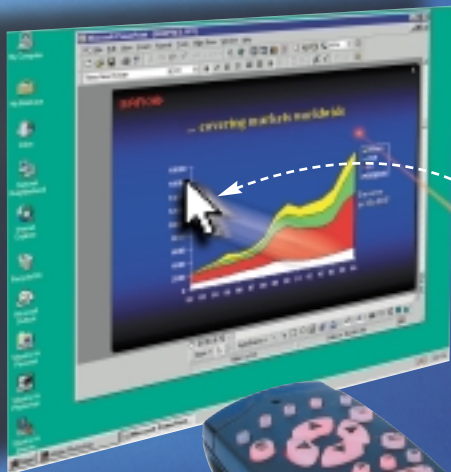
A sliding lamp socket behind a detachable ventilation panel makes lamp replacement easy.

Ideally suited for both fixed installations and mobile applications:

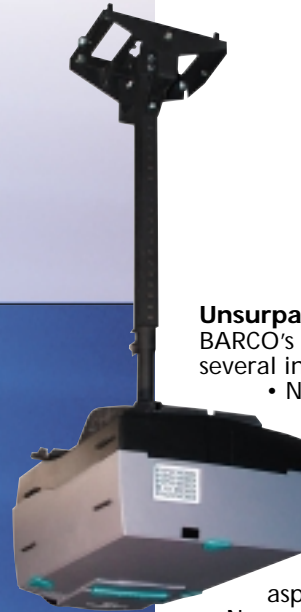
Vast Array of Accessories

A variety of transport and set-up possibilities is offered by the following accessories:

- Flexible Ceiling Mount
- Multifunctional Frame
- Convenient Soft Case
- Rugged Flight Case
- Service Tool Kit
- Lens Shutter: blanks the image when projector is paused



Customizable Remote Control (left) and Executive Remote Control (right)



Unsurpassed Ease-of-Use

BARCO's 6300 Series incorporates several innovative features:

- New user-friendly and backlit remote control
- Motorized zoom, focus and lens shift (horizontal and vertical)
- Easy switching between 4:3 and 16:9 aspect ratio
- No convergence adjustments are required
- Automatic standby mode
- Multiple control facilities

Personalize Your Projector

Save a personalized background image and a logo into the projector.

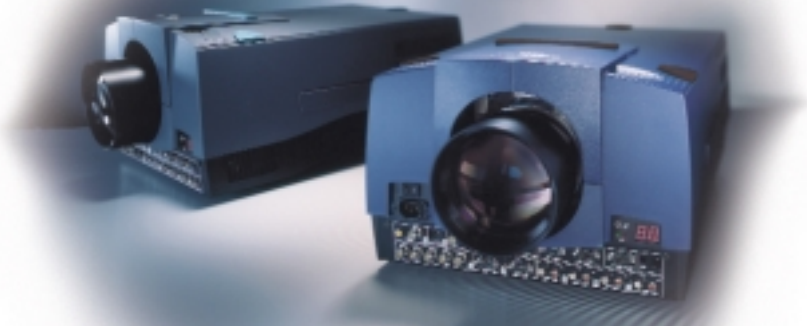
Configurable Remote Control

15 different functions are easily addressable by 5 programmable buttons on the remote control.

Executive Remote Control

- Direct audience attention with an integrated laser pointer
- Navigate through the presentation and control the operating system of the computer by using the built-in mouse control.

Technical Specifications



BARCOGRAPHICS 6300

Light Output

2,200 ANSI lumen
2,400 center lumen
Brightness uniformity: 90 % for the total screen

LCD Panels

3 active matrix poly-Si LCD panels (1.8" diagonal), with a resolution of 1024 x 768 pixels (aspect ratio 4:3). LCD panels are selected for a minimum of pixel defects.

Contrast Ratio

>350 : 1 (full white/full black)
>120 : 1 (5 x 4 ANSI checker-board)

Scan Frequencies

Horizontal 15 kHz - 100kHz
Vertical 25 Hz - 150Hz

Compatibility

The BARCOGRAPHICS 6300 is compatible with :

- All current video sources (PAL, SECAM, NTSC 3.58, NTSC 4.43) in Composite, S-VHS, Component or RGB formats
- All currently proposed HDTV, extended and improved television standards (Eureka 95, Hi-vision, ACTV, IDTV, EDTV,...)
- All computer graphics formats from VGA, S-VGA, XGA to S-XGA
- Most Macintosh computers
- Electronic workstations with a resolution up to 1280 x 1024 pixels / 76 Hz
- Most sources with a pixel clock up to 135 MHz

BARCOREALITY 6300

Light Output

2,000 ANSI lumen
2,200 center lumen
Brightness uniformity: 90 % for the total screen

LCD Panels

3 active matrix poly-Si LCD panels (1.8" diagonal), with a resolution of 1280 x 1024 pixels (aspect ratio 5:4). LCD panels are selected for a minimum of pixel defects.

Contrast Ratio

>350 : 1 (full white/full black)
>120 : 1 (5 x 4 ANSI checker-board)

Scan Frequencies

Horizontal 15 kHz - 115 kHz
Vertical 25 Hz - 150 Hz

Compatibility

The BARCOREALITY 6300 is compatible with :

- All current video sources (PAL, SECAM, NTSC 3.58, NTSC 4.43) in Composite, S-VHS, Component or RGB formats
- All currently proposed HDTV, extended and improved television standards (Eureka 95, Hi-vision, ACTV, IDTV, EDTV,...)
- All computer graphics formats from VGA, S-VGA, XGA to S-XGA
- Most Macintosh computers
- Electronic workstations with a resolution up to 2000 x 1280 pixels / 76 Hz
- Most sources with a pixel clock up to 200 MHz

BARCO 6300 SERIES

Lamp

400 Watts metal-halide arc lamp pre-aligned for max. light output
Typical lifetime: 750 hours with a brightness maintenance of 80%

Screen Width

From 1 - 6 m, except for the QGD (0.8:1) lenses

Remote Control

All controls are accessible through a soft-touch panel or a new user-friendly backlit IR remote control:

- Source switching
- User settings per source
- Installations and service adjustments

Inputs

1 x Configurable 5-Wire (BNC) for: Composite Video, S-Video, Component Video and RGB
1 x Video (BNC or RCA)
1 x S-Video (4-pin mini-DIN)
1 x VGA (D15 connector)
3 x Configurable Stereo Audio (RCA)

Optional:

1 x Serial Digital Input/Output
1 x IEEE1394 FireWire

Output

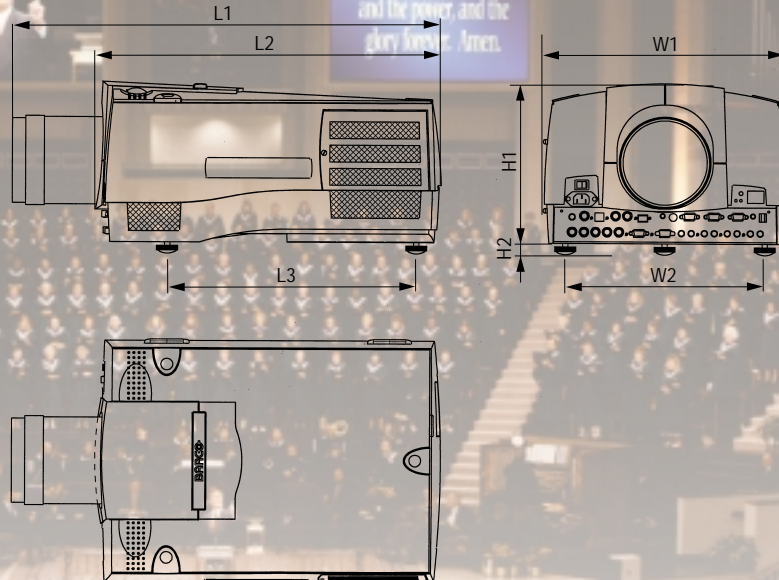
1 x VGA (D15 connector)
1 x Stereo Audio (RCA)
1 x Trigger Output Mini-jack (e.g. for motorized screen control)

Communication

2 x D9 connectors for RS232 In/Out
1 x D9 connector for Com 800
1 x Mouse Out (DIN 13)
1 x Mini-jack for Wired Remote Control
2 x IR receivers (front + back)

Dimensions	mm	inch
L1*	655	25.76
L2	527	20.76
L3	380	15
W1	371	14.6
W2	306	12
H1	245	9.65
H2	12 - 24	0.47 - 0.94

* with QGD (1.36 - 2:1) zoom lens



Shipping Dimensions

L	710	28.0
W	550	21.7
H	470	18.5

Special Features

- Auto-source recognition and configuration
- Extensive geometry adjustments (motorized zoom, focus and lens shift) can also be adjusted through the RS232 communication port
- Up to 120% off-axis projection and extra 25% keystone correction
- Quick lens and lamp replacement
- Adjustable leveling feet
- Connectors at the front for almost invisible cable routing
- Built-in 2 x 3 Watt stereo audio amplifier and speakers
- Color temperature adjustment (Broadcast 3200° K, Film 5400° K, Video 6500° K, Computer 9500° K or Custom)
- External auto-diagnostics with a 2 x 7 segment LED display
- User adjustable Automatic standby (after 5/15/30/60 min. or off)
- Easy upgradeable projector firmware via RS232
- Optional light shutter blanks image when paused
- Optional LCD control software to control up to 256 projectors from one PC

AC Power

Power factor pre-regulated SMPS, 95 - 230 VAC +10% / 50-60Hz

Power Consumption

Max. 570 Watts
Power dissipation < 2,000 BTU/hour

Safety Regulations

Compliant with UL1950 and EN60950

Electromagnetic Interference

BARCO's 6300 Series complies with FCC rules & regulations, part 15 Class B and CE EN55022 Class B

Warm-Up Time

Less than 3 minutes to meet full specifications

Noise Level (0-26°C / 32-79°F)

39dB(A) at 39.4" / 1m (3.3 ft)
33dB(A) at 78.8" / 2m (6.6 ft)

Environmental Conditions

Temperature
- Operation 0°- 40°C / 32°- 104°F
- Storage -20°- 60°C / -4°- 140°F
Humidity
- Operation 35 to 95%
- Storage 10 to 95%

Weight

Net weight:
Body only 17.7 kg / 39.0 lbs
Body + lens (depending on the lens) 21 - 25 kg / 46.3 - 55.1 lbs

Shipping weight: max. 29 kg / 63.9 lbs

Accessories Included

- Infrared remote control
- Owner's and installation manual
- Power cord with CEE (7) VII plug

Order Information

BARCOGRAPHICS 6300	R9001440
BARCOGRAPHICS 6300 RST (optimized for Optical Screens)	R9001441
BARCOREALITY 6300	R9001550
BARCOREALITY 6300 RST (optimized for Optical Screens)	R9001551

Optional Accessories

Ceiling Mount CM6000	R9829860
CM 50 Adapter Plate	R9829910
CM 100 Adapter Plate	R9840080
Flight Case	R9829870
Soft Case	R9829880
Multifunctional Frame	R9829890
Lamp (400 Watt)	R9829900
Light Shutter	R9829930
Executive Remote	R9829960
Service Tool Kit	R9829940
Software LCD	R9829670

Lenses

QGD (0.8:1) 50-72"	R9829800
QGD (0.8:1) 84-120"	R9840040
QGD (1.27:1)	R9840000
QGD (1.36 - 2:1) motorized zoom	R9829850
QGD (2 - 2.8:1) motorized zoom	R9829790
QGD (3.4 - 4.5:1) motorized zoom	R9840060
QGD (4.5-6:1) motorized zoom	R9840100
QGD (7:1)	R9840030

Founded in 1934, BARCO is the acknowledged global leader in advanced large screen display products. BARCO has been a pioneer in the research and development of numerous display technologies. This experience now serves as the basis for the development of high-quality, state-of-the-art solutions for large projection systems used in the most diverse applications.

BARCO has a dynamic team of design engineers who continuously strive for improvements in performance, quality and reliability in order to create the most innovative projection systems. BARCO's 6300 Series, the perfect combination of high brightness, high resolution, compact size and versatility, is a reflection of this uncompromising spirit.

A specialized distribution network and subsidiaries in over 95 countries worldwide allows BARCO to respond quickly and efficiently to local customer requirements.

Through its dedication to excellence and commitment to total customer satisfaction, BARCO Projection Systems is your ideal partner to fulfill your most demanding requirements for high-resolution, large screen projection systems.

BARCO Projection Systems - Head Office
Noordlaan 5, 8520 Kurne, Belgium
Tel: +32 / 56 / 368 21 Fax: +32 / 56 / 351 651

Visit BARCO on the Web: <http://www.barco.com>

BARCO



Ref. n° R599496-01 August 1999